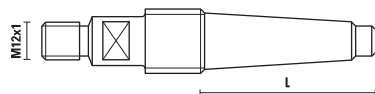


ADATTATORI C.M.2

ART. Z021

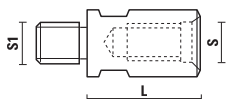


Da utilizzare con Art. R130

Rotaz DX	Attacco	L
Z021.500.R	C.M.2/fil. M20	67

ADATTATORI O PROLUNGHE

ART. Z021

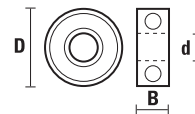


Da utilizzare con Art. R130
e Art. F101 - F103 - F104 - F105 - F202 - F203 - F204

Rotaz DX	S	S1	L
Z021.600.R	M12x1	M12x1	25
Z021.601.R	M12x1	M10x1,5	25
Z021.610.R	M10x1,5	M12x1	25
Z021.611.R	M10x1,5	M10x1,5	25

CUSCINETTI

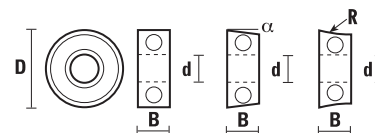
ART. Z050



Articolo	D	d	B
Z050.001.N	9,5	3,2	4
Z050.002.N	9,5	4,8	3,2
Z050.003.N	12,7	4,8	5
Z050.004.N	16	5	5
Z050.005.N	19	6,4	7,1
Z050.006.N	19	6	6
Z050.007.N	12,7	6,4	4,7
Z050.008.N	22	8	7
Z050.009.N	25,4	15	5,5
Z050.010.N	28	8	9
Z050.011.N	15,8	6,4	5
Z050.012.N	19	12,7	4
Z050.013.N	38	15	8,5
Z050.014.N	35	15	11
Z050.015.N	28,6	12,7	8
Z050.016.N	33,5	8	8,6
Z050.017.N	6,4	3,2	2,8
Z050.018.N	16	8	5
Z050.019.N	14	8	4
Z050.022.N	16	4,8	5
Z050.023.N	19	4,8	5
Z050.024.N	19	5	5

CUSCINETTI RICOPERTI "DELRIN"®

ART. Z050



Per lavorazione di pannelli in superfici solide (CORIAN®)

Articolo	D	d	B	α	R
Z050.100.N	12,7	4,8	3,2	0°	
Z050.101.N	19	6,4	5	0°	
Z050.102.N	21,8	6,4	5	10°	
Z050.103.N	22,2	6,4	5	5°	
Z050.104.N	28,6	15	7	0°	
Z050.105.N	19	6,4	6,4		R=12,7
Z050.106.N	25,4	6,4	7	5°	
Z050.107.N	28	8	8,5	0°	
Z050.108.N	29	8	8,5	0°	
Z050.109.N	34	8	8,5	0°	
Z050.110.N	22	6	7	11°	
Z050.111.N	19	6	7	0°	
Z050.112.N	28,6	7,9	7	0°	
Z050.113.N	19,5	6,4	6,4	-	R=11,9
Z050.120.N	22,2	6,4	5	10°	